

ANNUAL REPORT 2015

CONTENTS

3	Message From The Founder President
4	Message From The Director
5	Farewell to the Co-Founder/ Volunteer Director
6	Major Accomplishments
8	2015 In Words And Pictures
25	Humane Dog Management Pogramme 2015
33	Equine Outreach Program 2015
40	Financial Overview
42	Animal Nepal Team



PRAMADA SHAH

*Founder, President
Animal Nepal*

2015 was an intensely challenging year for Nepal and for the people of Nepal. I would like to take a moment to remember the victims, both humans and animals, who lost their lives to the devastating 7.8 magnitude earthquake that struck us on April 25th.

The Animal Nepal team deserves a big thank you for springing into action immediately, despite some of them having lost their own homes. Animals were the last things on people's minds. Yet, the courage our staff showed to tend to injured animal, despite the great human loss, by visiting villages and providing their services to those most in need was heartrending and inspiring. The villagers welcomed us with open arms to save their injured and dying animals, which they were desperate to save as their livelihood depended on these animals. The overwhelming support shown by the international community to help on the ground level was truly commendable. Vets without borders were supporting our small but overwhelmed treatment. Animal Nepal would like to extend a heartfelt thank you to Dr. Ben and Dr. Springer. You were amazing.

We were able to help our friends in the brick kilns with the support from our partner Donkey Sanctuary UK, who were the first ones to call me and ask how they could help the donkeys and their owners. We provided the donkey owners with the much needed tarpaulin and food. Thank you DS UK, we know we can count on you always.

Our regular work was obviously hampered by the earthquake and in addition the 5 months blockade severely affected the availability of fuel which again impacted our work. However we have got back on track and the Humane Dog Management Program spayed about 400 dogs. The Donkey Outreach Programme continued its work in 15 brick kilns of Laitpur. Animal Nepal is currently lobbying with the Nepal government for the formation and adoption of an Animal Welfare Act. I hope 2016 will be a more stable year for Nepal and that Animal Nepal will be able to reach out to as many needy animals as possible.

A big thank you to all our supporters and donors, both international and local. We look forward to your continued support and belief in our work. Animal Nepal continuously endeavors to improve our quality of services, and the board are involved and motivate the team to work with compassion and professionalism.



UTTAM KAPHLE

Executive Director Animal Nepal

When a 7.8 earthquake struck Nepal on April 25, 2015, we at Animal Nepal were busy trying to find a safe place for our families and for the animals in our care. It was only after about a week that we understood the scope of the damage, and started reaching out to the thousands of suffering animals in the districts in central Nepal.

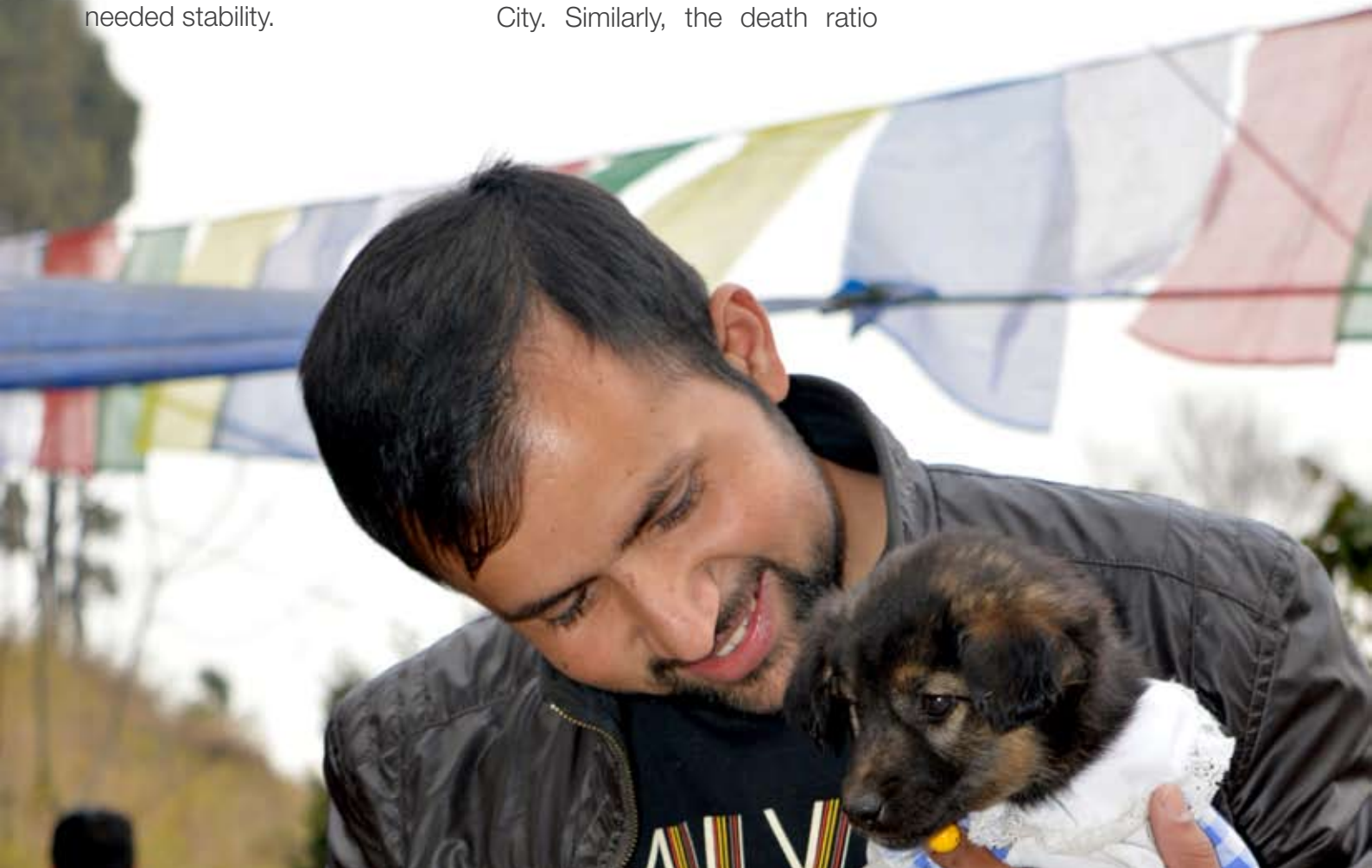
2015 was undoubtedly the most troubled year in the history of Animal Nepal, marked not only by thousands of aftershocks but also a blockade that led to a crisis in basic supplies, and ongoing political instability. These factors create many obstacles to our work. We have been tried and tested, and can only hope 2016 will bring much needed stability.

However, if we observe the past decade, we see a significant change in people's perceptions towards animal welfare issues. We are encouraged by the encouragement we get from national and international supporters, kind community people, government and donors agencies. We believe that our achievements are paving the way for our country to become an animal cruelty free nation. We would like to invite you all to take part in this movement. Together we can bring happiness in the lives of needy animals in Nepal.

The Humane Dog Management Programmedirectlyandindirectly has played vital role to reduce stray dog population (65%) of Lalitpur Sub Metropolitan City. Similarly, the death ratio

of working equines in Animal Nepal's working area has sharply reduced. Various good practices has been introduced in the brick kilns including a day off for working equines, limited loads, decrease in wounds and improvements in the overall condition of working equines. Our work has drawn the attention of public and related stakeholders supporting increased attention to animal welfare.

My deepest gratitude goes to the Executive Board, our dedicated staff, the kind community people, helpful media personalities/houses, government line agencies and of course our wonderful donors and well-wishers worldwide.





Farewell to the Co-FOUNDER/ VOLUNTEER DIRECTOR and a WONDERFUL COWORKER!

Lucia De Vries

This year we faced a major organizational shift when we bid farewell to our wonderful co-founder and a volunteer director Lucia de Vries. She handed over her responsibilities as a Volunteer Director to Uttam Kafle and now acts as an Advisor.

A Dutch journalist and communication consultant, Lucia has lived in Nepal since 1992. Together with friends Jessy and Maria Rai, Roselle Prisno and Jiggy Gaton, she founded Animal Nepal as a non-profit company in 2004. After teaming up with social activist Pramada Shah, the organisation spread its wings and Animal Nepal was registered as an NGO in 2008. A student of Peace Studies, Lucia has been a vegetarian from the age of 17. Her desire

to help animals started when she found an injured dog on the street of Kathmandu in 1992 and realized there was no place to provide affordable, quality treatment.

Although she continued to make her living as a foreign correspondent and communication consultant, caring for Nepal's animals soon took over her life. She focused on developing Animal Nepal as a professional organization, combining the best of practices from the East and West. She promoted advocacy and campaigning to bring about lasting changes, mobile treatments (versus hospitalization), close collaboration with communities and creative approaches attracting wider audiences. Lucia continues to work in

Nepal, and presently joined Oxfam in Nepal's earthquake response programme. She continues to conduct mobile treatments in her free time and caring for four rescued strays, Bobby, Chalky, Tutti and Bhangy.

It was a great pleasure working with Lucia and her loss will be greatly felt, including the creative ideas she brought to the team on a regular basis. Thank you Lucia for your time and dedication in establishing and building Animal Nepal. Animal Nepal family will miss your bright and cheerful face around. And remembering the impact you've made on the organization and Nepal's suffering animals, we would like to wish you all the best for your future!



MAJOR ACCOMPLISHMENTS



A total of 1,052 dogs were treated under our Humane Dog Management Programme 2015. Most of the treatment cases this year were fractures and injuries including other common problems like Paralysis, CTVT and Mange. Besides, 1,350 dogs were vaccinated against rabies and parvo virus and 376 dogs were sterilised under our ABC programme.

A total of 585 equines were brought this season to work in 15 brick factories of Lalitpur. We witnessed that the culture of bringing sick animals from Nepalgunj had reduced substantially compared to previous years as equine owners have become much aware. The year marked 1,491 equine treatment cases along with 7 rescues. A total of 606 equines were vaccinated against tetanus and rabies.

The mid-year remained extremely challenging for us as the country was hit by the great earthquake on April 25. AN launched an Emergency Appeal to respond to the crisis through donation and volunteer appeal. Our rescue programme continued even during the disaster aftermath and we were able to treat more than 900 animals. We also went out on relief distribution in brick factories and treatment of injured animals with the support of The Donkey Sanctuary UK. And with the kind support from Animal Aid Abroad, we finished rebuilding our new isolation unit at the end of 2015 which came down during the earthquake. Similarly, with the help of Mayhew Animal Homes we were able to set up solar system at our dog treatment center. We also like to thank Brigitte Bardot Foundation for helping us in renovation of our dog treatment center.

End of the year marked our visit to Nepalgunj where we set up a office (resource centre) for the equine owners. Our aim is to conduct some basic trainings for the equine owners on health related problems and also a support to the women of their family by organizing micro credit service for them.

With the aim of working towards a better understanding of mule use in and after natural disasters in the mountain region of Nepal, AN started its assessment of Mountain mules in the mountain region of Nepal with the support of TDS UK. With the programme Animal Nepal aims to find out overall condition of working mules in mountain region of Nepal.



1,052 DOGS
TREATED



1,350 DOGS
VACCINATED



376 DOGS
STERILISED



25+ DOGS
ADOPTED



1491 EQUINE
TREATMENT CASES



7 EQUINE
RESCUED



606 EQUINE
VACCINATED



10,000+
FOLLOWERS

2015

IN WORDS & PICTURES



**JAN
2015**



ANIMAL AID ABROAD VISITS ANIMAL NEPAL

At the start of the year the Animal Nepal team was pampered with the visit of a team of volunteers from Animal Aid Abroad Australia (AAA). The eleven AAA members came with the purpose of getting to know Animal Nepal better and donating lots of useful

medicines and special equipment, including a microscope. AAA visit turned out to be extremely fruitful. The donations helped us improve the lives of many suffering animals throughout the year.

**JAN
2015**



AN THANKS ELEPHANT FESTIVAL FOR ORGANISING ELEPHANT PICNIC

Animal Nepal since a number of years has requested the organisers to introduce humane activities, that are truly fun for elephants. Although the regular games took place as well this year, the picnic was added to create a more relaxing activity for the elephants. Interestingly, compared to the games, the

picnic was most appreciated by the visitors. A long row of elephants enjoyed a nutritious meal including fresh fruits and vegetables in the picnic. Animal Nepal gave kudos to the organisers of the Sauraha festival for taking up its suggestion to organise the picnic.

FEB
2015

'A DONKEY IS NOT A MACHINE'

As the brick making season started, Animal Nepal started its mobile health camp with Kantipur Brick Factory located at Lalitpur district. The camp was supervised by our expert team of vets that included Dr Suman Khadka and paravets Shankar Sapkota, Tara Shrestha and Hari Krishna Shrestha. Among the treated equines most suffered from saddle wounds and high fever. Equines were treated accordingly and healthy equines were dewormed and vaccinated.

FEB
2015

A SPECIAL TRAINING TO ANIMAL NEPAL STAFF BY DONKEY SANCTUARY INDIA

AN has been supported with technical inputs by the Donkey Sanctuary India since many years. Their monitoring visits at equine bazaars have benefited our outreach activities tremendously. This year too AN's equine outreach members Dr. Atish Kumar Yadav and vet technician Hari Krishna Shrestha returned with fresh energy and knowledge from the training they received from DS India. Thanks DS India!

**FEB
2015**



ROMANCING STREET DOGS ON VALENTINE'S DAY

AN's Valentine's programme featured dogs wearing romantic and adventurous outfits, a kissing booth in which wanna be models were photographed with a rescued dog and an Adoption Corner. The highlights of the programme was the Kissing Booth in which dog lovers were photographed snuggling up with a rescued canine date. Both parties felt the date was a big hit.

**MARCH
2015**



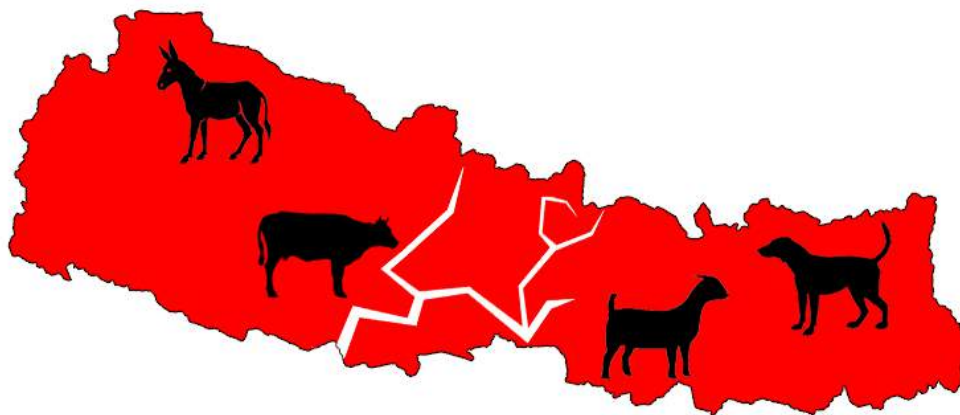
DONKEY SANCTUARY UK TEAM GOES LOCAL!

AN was honoured to receive a visit from a high level team from TDS UK. The purpose of the visit was to observe AN's Working Equine Outreach Programme and discuss further collaboration. TDS UK team consisted of Stephen Blakeway, Julia Smith and Dr. Ramesh Kumar. During the visit TDS UK team shared its willingness to continue supporting our outreach programme' in the future. The team also showed interest in working together through Brick Clean Network to improve living condition of working animals through standards and legislation.

APRIL
2015

EARTHQUAKE RELIEF FOR ANIMALS

animalNEPAL.org



THE GREAT EARTHQUAKE AND IMMEDIATE RELIEF APPEAL FOR ANIMALS

AN launched an Emergency Appeal to respond to the earthquake that struck Nepal on Saturday April 25 has left a trail of devastation. Apart from hundreds of thousands of people, countless animals were

affected too. AN focused on four interventions: Emergency outreach in four districts, Staff support, Lost and found dogs, Reconstruction and Community member support.

MAY
2015



AN CALLS RELIEF AGENCIES TO INCLUDE ANIMALS IN ITS RESCUE OPERATIONS

AN called all relief agencies to include animals, especially livestock, in its rescue and relief operations. AN also developed tips for the safe disposal of carcasses as disinfecting carcasses was a priority to stop the spread

of deadly diseases. The organisation also coordinated media outreach to make sure communities were aware of the importance of disinfection and carcass removal as countless animal bodies were buried under the rubble.

**MAY
2015**



AN ORGANISES WORKSHOP ON CASTING AND DOWNER COWS

AN organized a hands on workshop on broken limbs and 'downer cows', cows. Trainers Dr Springer Browne and Ben Brown from World Vets prepared a simple protocol for casting. The objective of developing the protocols was to enable professionals to carry out these life saving procedures independently and conduct follow up support. This protocol was made to assist local and foreign veterinarians working in animal disaster relief to best treat this condition, given the cultural aspects of cattle in Nepal.

**JUNE
2015**



900+ ANIMALS TREATED IN THE WAKE OF DISASTER

AN in the wake of the disaster treated around 900 animals, including 28 working equine in brick factories. Three veterinary teams took great risks to visit the worst affected districts, including Lalitpur, Dhading, Sindhupalchowk and the outskirts of Kathmandu to help desperate farmers. With the help of two livestock vets from World Vets, Animal Nepal mobilized three teams to reach out to injured livestock in Kathmandu, Lalitpur, Dhading, Rasuwa, Nuwakot and Sindhupalchowk. A total of 900 animals were treated, including 500 working equines, 150 farm animals in Lalitpur, 132 in Sindhupalchowk and 80 in Dhading District.

JUNE
2015

ON AIR FOR ANIMALS

AN with the aim to be a voice for the voiceless went ON AIR for those who can't speak for themselves. Supported by AN, Nepal FM at 91.8 MHz has been broadcasting a unique radio reports on animal welfare issues as part of its weekly 'Samaya Samikchya' programme. The reports are supported by interviews from resource people who can be an animal activist, a government officer or any member of the general public. Till now the programme has included some important topics regarding animal welfare like Humane dog population management, AN Chobar Animal Treatment Center, Equine work in brick factories, Animal Welfare Law in Nepal, etc.

JUNE
2015

ANIMAL NEPAL RECOMMENDES LIVESTOCK KIT TO AID AND RELIEF AGENCIES

AN created a list of contents for a comprehensive Livestock Kit which was shared with aid and relief agencies. The kit helped farmers to improve the health of their animals, and make sure their basic needs are met. AN also recommended relief agencies to connect farmers to existing livestock services, provide Livestock Kit to improve well being of animals and to support resilient shelter construction.

APRIL
2015



EARTHQUAKE RELIEF IN BRICK FACTORIES OF LALITPUR WITH SUPPORT FROM TDS UK

AN from the second day of earthquake conducted a rapid need assessment and decided to provide emergency treatment, temporary shelter (tarpaulins and ropes) to owners and animals as well as distribute two weeks' worth of basic food materials like rice, lentils, salt, noodles, oil, rehydration salts, etc. A total of 585 equines were brought this season to work in 15 brick factories of Lalitpur. Altogether there are 46 equine owners, with each a number of relatives and handlers. A total of 500 people were identified as beneficiaries in the relief program. With the kind assistance of **THE DONKEY SANCTUARY UK**, AN team and St Xaviers' School student volunteers distributed relief goods in brick factories, including feed for equines. A great sense of relief was seen on the faces of the people. Not only to the owners and handlers, animals were also provided with nutritious feeds like maize, barn etc. Besides the distribution of the relief goods, the injured animals received immediate treatment.



JULY
2015

EARTHQUAKE RELIEF FOR ANIMALS

Interim Report Mid June 2015

AN RELEASES INTERIM REPORT ON EARTHQUAKE RELIEF FOR ANIMALS

AN launched its interim report on Animal Nepal Earthquake Relief for Animals which included the details of the relief program with special thanks to all supporters and donors including Animal Aid Abroad, Brigitte Bardot Foundation, Donkey Sanctuary UK, Embark, Greater Good, Help Animals India, Lush, Mayhew Animal Home, One Voice, Robin Hood, Serve and Share, World Vets and all individuals who helped us to reach out as many animals as possible. Special mentions included countless individuals from US, Canada, Australia and Europe for their contribution towards our relief program.

JULY
2015

ANIMAL NEPAL PROMOTES EARTHBAG SHELTERS

AN was pleasantly surprised when its earthbag/adobe shelter did not sustain a single crack during the earthquakes that hit Nepal in April and May. Hence, Animal Nepal promoted earthbags as a safe and sustainable building method in Nepal. The concept behind the eco-friendly shelter was to offer an alternative to using 'blood bricks', because of the inhumane situations in the brick industry. Besides, Earthbag is also an affordable and earthquake safe building method for Nepal and has lived up to all expectations till now.

AUGUST
2015

PRE-SCHOOL KIDS VISIT TO DONKEY SANCTUARY

37 students along with 9 staff members from Lavender Pre-school visited Godavari Donkey Sanctuary where they were just amazed to be surrounded by so many rescued animals. The kids were stunned to hear about the condition of these amazing animals in the Brick factories and how they are abused and made to overwork. The visit was actively oriented by Dr. Atish Yadav. AN appreciated teachers and staff members of Lavender Pre-school who thought that besides their basic curriculum and sports, these children should also be taught love and compassion.

SEPT
2015

ANIMAL NEPAL CAMPAIGNS AGAINST ROAD AND RAILWAY CONSTRUCTION INSIDE CHITWAN NATIONAL PARK

AN relaunched its campaign against road and railway construction inside Chitwan National Park. The organisation strongly opposed the construction of an East West Railway, Terai Hulaki Highway and feeder roads inside the park and through the Chure hills stating Chitwan to be a unique protected heritage site that has taken forty years to develop and the government has no right to destroy its habitat in the name of development. AN also stated that the project threatened tourism and decades of conservation that has rescued the tiger and rhino from the brink of extinction.

SEPT
2015

"HIS FEELINGS ARE MY WORDS"
Sanrakshika Manandhar



SELFIE CONTEST ON WORLD ANIMAL DAY 2015

On the occasion of World Animal Day AN called out for "Me & My Best Friend" selfie contest where animal lovers could send their lovely selfies with their dearest furry friends and get a chance to win exiting treats and gift hampers for their favourite animal companion. The purpose of the contest was to cherish the most important relationship of human and animal by doing something fun and highlighting their friendship and their importance. Sanrakshika Manandhar turned out to be the lucky winner who sent us her lovely selfie with her beloved 'Bhotu' with a caption, "Your feelings are my words"

SEPT
2015



"END RABIES TOGETHER", WORLD RABIES DAY

As part of our each year programme on World Rabies Day, Animal Nepal this year too vaccinated 86 dogs with anti-rabies vaccination from different wards surrounding Patan Durbar Square. Each year AN conducts vaccination camp at Patan Durbar Square premises which continued this year too.

Send us a selfie of
your furry friend
and get a chance
to win a special message
and a exclusive gift hampers

**OCT
2015**

SPECIAL MONTH FOR OUR SPECIAL NEEDS DOGS

At Animal Nepal we give all the care and treatment to dogs that have even a slightest hope of survival. As a result many 3 legged dogs ends up on our shelter most of the time being unnoticed by the adopters. People always tend to adopt a normal dog believing that handicapped dogs do not make a complete pet. However, some of our lovely adopters have proved it wrong by adopting our 3 legged dogs without a hint of hesitation. In the month of September alone we were able to give home to 3 special needs dogs (One puppy and two adults). These generous adopters shared with us how amazing their life has become after they made the decision to adopt them.

Among the adopted ones were our very popular earthquake survivor Siddhi, Kara a four months old puppy who survived a deadly accident and endured the pain for days without any treatment. The third one was an adult dog Samba who was also brought in from an accident case and later adopted by the same person who rescued her and brought her for treatment.



NOV
2015

ANIMAL NEPAL LAUNCHES NOVEMBER VEGAN CHALLENGE



As an animal welfare organisation Animal Nepal thought it was important to promote cruelty free lifestyles, and food as an important part of animal welfare. Hence, in the month of November Animal Nepal launched a 30 Days Vegan challenge where the challengers were given all necessary tips and guides to help them switch to a vegan lifestyle as well as learn more about the benefits of a plant-based diet and vegan living.

NOV
2015

VEGAN Lifestyle

A Guide for Making the Transition



ANIMAL NEPAL PUBLISHES IT'S VEGAN BOOKLET

As part of its vegan challenge programme, Animal Nepal launched a vegan booklet which aimed to guide people curious about veganism or those who may have attempted it before and wish to try again in a more determined manner. The booklet contains all the detail information on vegan lifestyle including tips and guides on finding vegan restaurants and fast food around our city area.

**NOV
2015**

KUKUR TIHAR CELEBRATED WITH TIKA, MALA & SOME WOOFES!

Animal Nepal this year too invited dog lovers to worship rescued canines at its Chobar Animal Hospital. And to our surprise we witnessed good numbers of dog lovers despite of vehicle and fuel crisis due to recent blockade. The programme featured a lovely speech from AN's Founder President Pramada Shah and Director Utam Kaphle who expressed their deep concern about pet abandonment. We were delighted to see people bringing their kids who had some curious eyes for our shelter dogs. Visitors offered blessings with tika and mala to our rescued dogs. The event also featured a "Donate a Blanket" corner where the visitors donated some warm blankets to help sick and injured dogs get through the winter ahead. Some of our visitors also donated dog foods to our furry friends at Chovar.

AN was encouraged to see how most people treasure their pets no matter how bad the situation, be it the earthquakes or the blockade. Partly due to the fact that many pets got lost after the earthquake, AN this year has taken care of an increased number of pure breed and senior dogs. Some were abandoned by their owners when they got sick or old. On the auspicious day of Kukur Puja, AN honored these pet owners and encouraged them to consider their pets as family members and never abandon them.



DEC
2015

ANIMAL NEPAL TREATS DOGS WITH CANCER SUCCESSFULLY IN MOBILE CLINICS

AN since 2009 has been successfully conducting treatments using vincristine. Since June the treatments are being conducted in mobile clinics. This approach was taken as the shelter staff were concerned about adverse effects from using vincristine inside the premises. Also, since the treatment is a lengthy one (taking at least one month), expenses could be greatly reduced by taking the treatment to the street. AN in the second half of 2015 treated 24 cancer dogs on the street. The new approach turned out to be successful. While one passed away, and two disappeared in the course of treatment, 21 fully recovered.



DEC
2015



GETTING TO KNOW THE MOUNTAIN MULES

In order to find out what the welfare conditions of mountain mules after the earthquake, Animal Nepal, with the support of Donkey Sanctuary UK (DSUK), started rapid Assessment of Mountain Mules. Due to a lack of medical support and resources, the main welfare problems seen were, lack of shelter, proper vaccination programmes and a poor understanding of animal welfare. As a result mountain mules suffer from various medical conditions including preventable wounds, lameness, colic, anurea, injuries and other communicable diseases.

As part of the programme, a team of veterinarian and a technician visited Gorkha district to collect information on the condition of mules and their owners. 17 mules' owners were interviewed and requested to fill out a questionnaire. Not all the mules could be covered in the survey as more than half are stuck in places where the routes collapsed by landslides caused by the April and May earthquakes. Over half of the mules were sent to places as far as Samagaun, Chaikampar, Machi Khola, Tsum Valley and even till Tibet before the beginning of our survey. A total of 1300 animals are being used for transportation in the region.



DEC
2015



A VISIT TO NEPALGUNJ

Animal Nepal with the support of The Donkey Sanctuary UK went to Nepalgunj on December where the team set up a office which is to work as a resource center for the equine owners. Through this office our outreach team aims to conduct some basic trainings for the equine owners like simple wound dressing, saddle, harness making, community education to make them understand value of donkeys and mules and basic trainings on other health related problems. The office at Nepalgunj was also helpful for bringing all the equine owners under one roof and discussing various issues. The visit not only helped the equine owners and their animals but also supported the women of their family by organizing a follow up meeting on micro credit service for them. Besides, our team also visited the Kanji house (place where sub-metropolitan city collects abandon animals and keep it in the house) where they talked to sub metropolitan city for the improvement.



HUMANE DOG MANAGEMENT PROGRAMME 2015





Table 1- Quarterly distribution of the major treatment program under Humane Dog Management programme 2015

Major Treatments	First Quarter (Jan-March)	Second Quarter (April-June)	Third Quarter (July-Sept)	Fourth Quarter (Oct-Dec)	Total
Sterilization	10	78	148	140	376
Treatment	488	171	249	144	1052
Vaccination	501	100	459	290	1350

Figure 1- Figurative distribution of major treatment program in each quarter

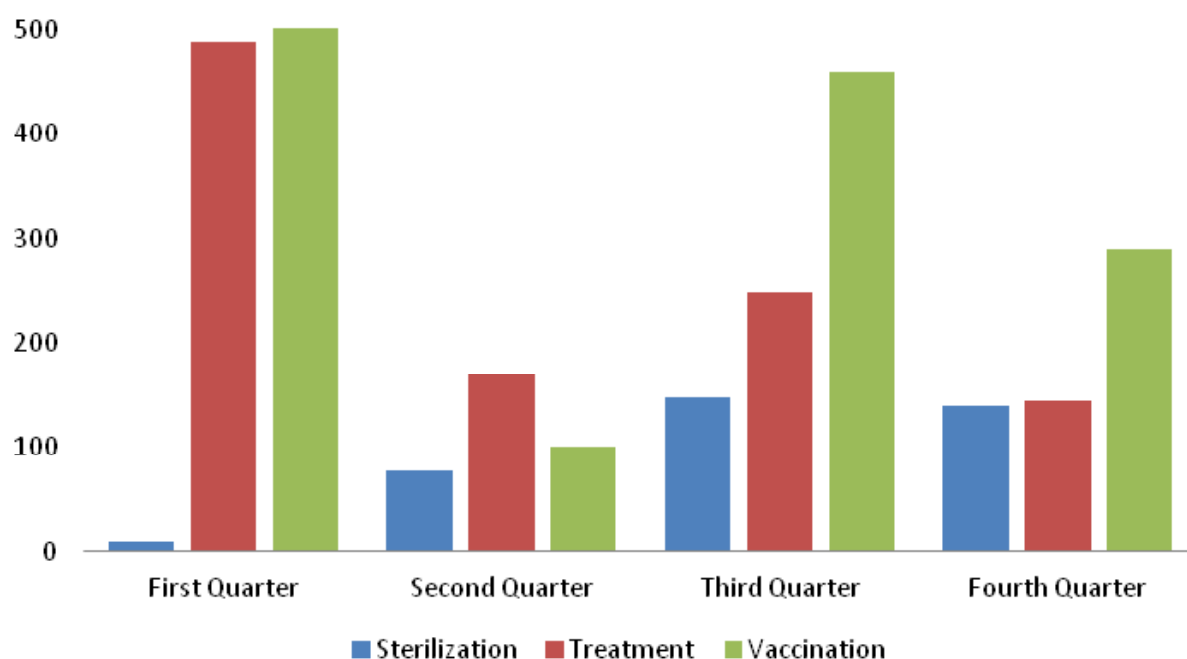
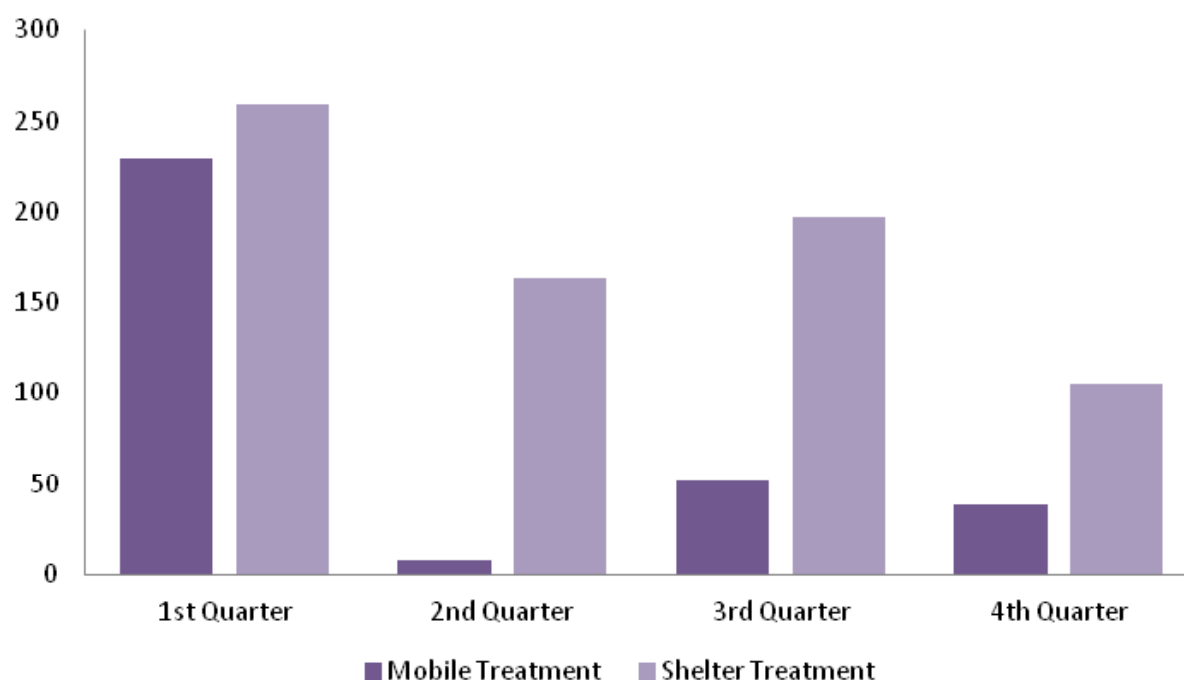


Table 2- Quarterly distribution of mobile and shelter treatments 2015

Treatments	First Quarter (Jan-March)	Second Quarter (April-June)	Third Quarter (July-Sept)	Fourth Quarter (Oct-Dec)	Total Treatments
Mobile Treatment (Including CTVT Dogs)	229	8	52	39	328
Shelter Treatment	259	163	197	105	724
Total Treatment (In each Quarter)	488	171	249	144	1052

Figure 2- Figurative distribution of mobile and shelter treatment 2015



Year 2015 was a highly successful year as we were able to treat a total of 1,052 dogs under our humane dog management programme. Most of the cases found this year were fractures and injuries including other common cases like external wounds, paralysis, CTVT, parvo, distemper and mange.

Because of the training of two newly hired vets in the beginning of 2015, only a minimal number of dogs (10) were sterilized during this first quarter hence comparatively

less dogs were sterilized this year (376 dogs) compared to previous years. A total of 1350 dogs were vaccinated against rabies and parvo virus under shelter treatment, mobile clinic and vaccination camps.

Since the shelter was flooded with puppies, we had to appeal for a special adoption drive where more than 25 puppies were adopted from the shelter alone. Besides, countless puppies got their permanent loving home through Animal Nepal's facebook page.



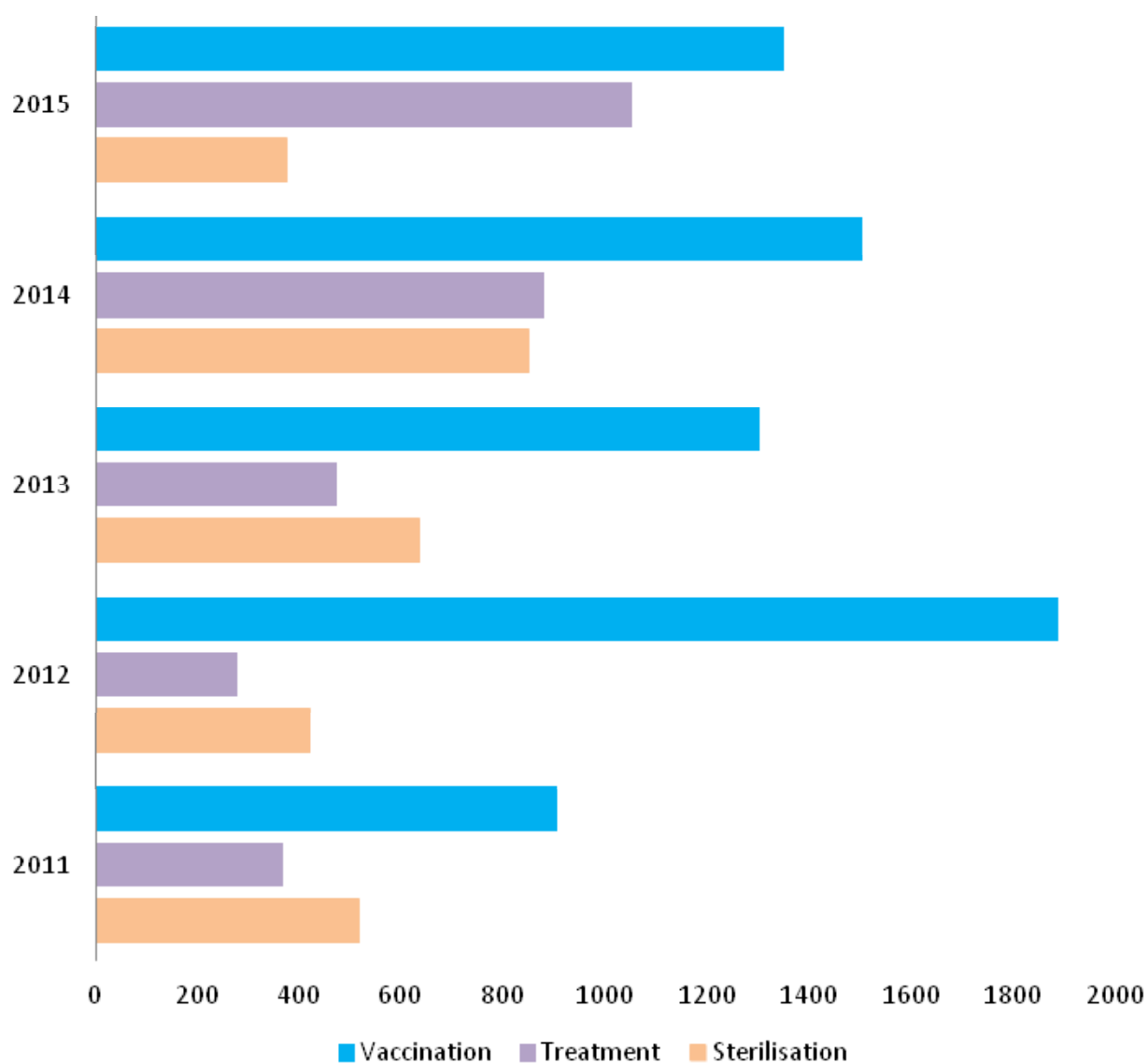


Figure 3- Figurative comparison of various treatment programme from 2011 till 2015.



SUCCESS STORIES 2015



WHITE BUDDY



White Buddy was rescued with a severe wound in his neck caused by the cut of sharp knife. The poor dog was kept under medication for more than 3 months. At first he used to be scared of people and wouldn't let any people or shelter dog come near him. After spending

a few days at the shelter White Buddy slowly started to like people, and welcomed visitors who would bring some tasty biscuits for him. White Buddy also got chance to celebrate Valentine's Day at our shelter and managed to date some wonderful girls. By then White

Buddy had transformed himself into an affectionate dog. People would go and hug him without any fear and he used to return the favour. After his complete recovery White Buddy was released in a safe community where local people promised to take care of him.

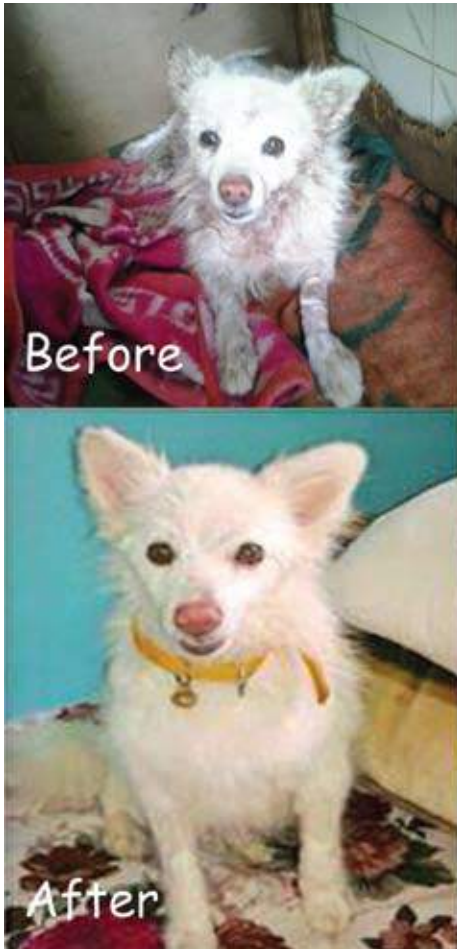
RANI



Among some of our amazing makeover stories that of Rani (Princess) really stands out. Rani, a lost or abandoned Jack Russell, was covered in messy dreadlocks when she was rescued from Taukhel by our team with the help of Hella Binnendijk. Initially weary of being touched, once she was picked up she surrendered to a new start in life. Rani was a one man's pet who liked to be treated like the special one.

We took her to Chobar dog shelter where we organized a special haircut session for her. After spending few weeks with us Rani gained some weight and started looking irresistible. After being bathed with anti tick and flea shampoo and provided with some medication Rani turned into a jaw dropping beauty. A dog crazy family from Jawalalkhel adopted Rani in March 2015.

DWARIKA



Animal Nepal found Dwarika around Dwarika hotel after the earthquake who got bitten terribly by other local dogs around. We hurried her to our treatment center. At the shelter, Dr Springer Browne (volunteer), Bikalpa (volunteer) and Santosh took hours to treat countless wounds Dwarika suffered. They were clearly the heroes for Dwarika. Dwarika stayed at our shelter for quite a long time and she was in her speedy recovery. We thank the World vet volunteers and our staff who didn't mind waking up in the middle of the night for Dwarika. After few week Dwarika was adopted by Sneha Shakya who takes excellent care of Dwarika, who now looks like Nepal's handsomest Spitz.

SIDDHI



Siddhi, was rescued from the rubble of a building 3 weeks after the earthquake. We found her front left leg completely broken with a terrible wound on her neck too. Her broken bone was sticking out of her wound and we could only imagine the level of pain she was enduring. Our vets found that Siddhi's metacarpal bone was exposed and the radius and ulna fractured in various places. We amputated her leg and treated the large wound on her neck. She lost a leg in the process. Siddhi finally found a home we so desperately wanted for her. "Ama Ghar" located in the midst of greenery which has been providing home for underprivileged children of Nepal welcomed Siddhi to its family of more than 50 children. She is happy and healthy – a loving new pet for the children, who were overjoyed to welcome her because they lost their young white dog Seti earlier this year. As you can see by the photos, Siddhi is enjoying all the attention and the children are so kind and sweet to her.

VICTOR



Victor was no normal dog! When he was rescued by our team completely malnourished with a dragging lower body, we had no idea he was going to walk and run again just like other normal dogs.


Victor after being diagnosed of a spinal injury that resulted in his posterior paralysis had no any hopes of recovery. But we knew he was a fighter by his cute little acts of possessiveness where he would drag himself to block visitors patting another dogs.

After being introduced slowly through a series of therapies and medication, Victor transformed to be one of the most handsome dog our shelter ever witnessed. Extremely sweet and friendly, Victor loves to be petted and belly rubbed. Though he still struggles over running and walking, he is seen running and playing most of the time. Probably, enjoying every bit of his new life in full speed.

SHERU



We found Sheru in a worst condition where he got a 24/7 bleeding nose. He was first suspected of having E canis but later diagnosed to have a Nasal Tumor and the bleeding nose which gave him hard times breathing. It was a nightmare for Sheru and for us to see him struggling this breath. Extremely friendly by nature, Sheru belonged to a Little angels School premises where according to a school teacher Serina Bista, Sheru was extremely missed by the school students. Sheru's nose had turned rough and hard due to continuous bleeding and he had started to lose weight rapidly and he would barely eat anything. After two and a half month treatment Sheru's bleeding stopped. The sad face started to brighten up and Sheru became that playful dog once more. After a complete recovery Sheru was released back to the school premises where he is getting his regular follow ups and all te loves from the students once again.



EQUINE OUTREACH PROGRAMME 2015



Table 3- Quarterly distribution of the major treatments under Equine Outreach Programme 2015

Major Treatments	First Quarter (Jan-March)	Second Quarter (April-June)	Third Quarter (July-Sept)	Fourth Quarter (Oct-Dec)	Total
Rabies and Tetanus vaccination	525	50	6	25	606
Deworming	525	50	18	25	618
Other treatment cases	135	86	45	11	277

Figure 4- Quarterly distribution of the major treatment programs

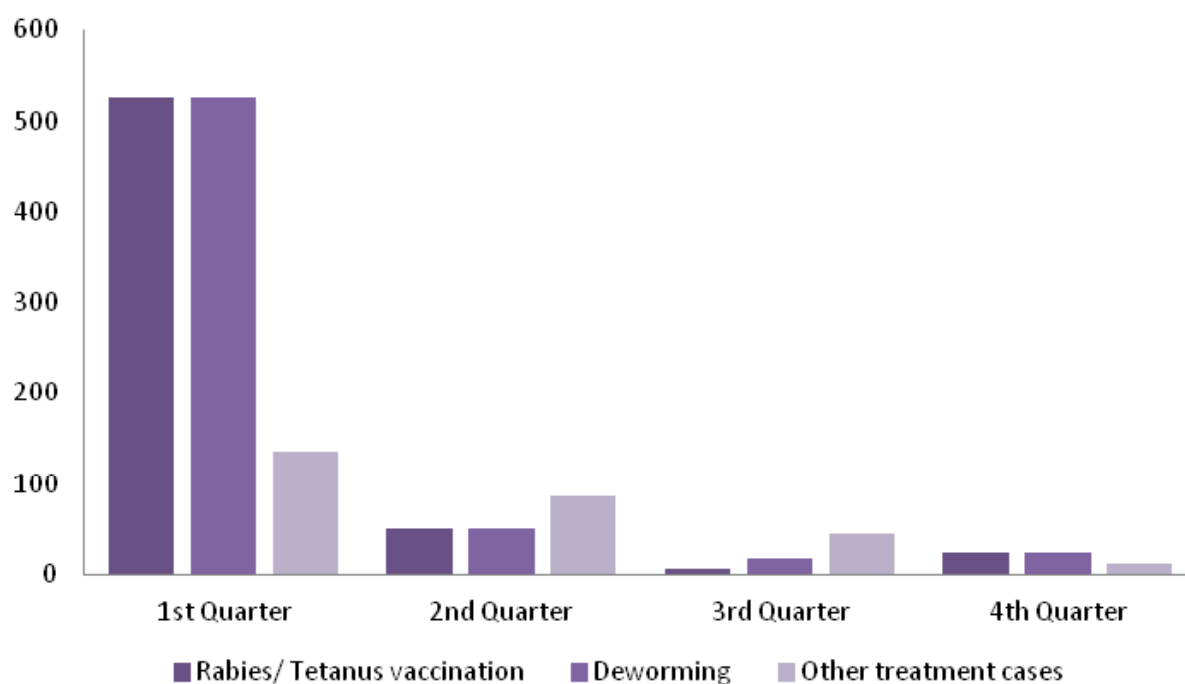
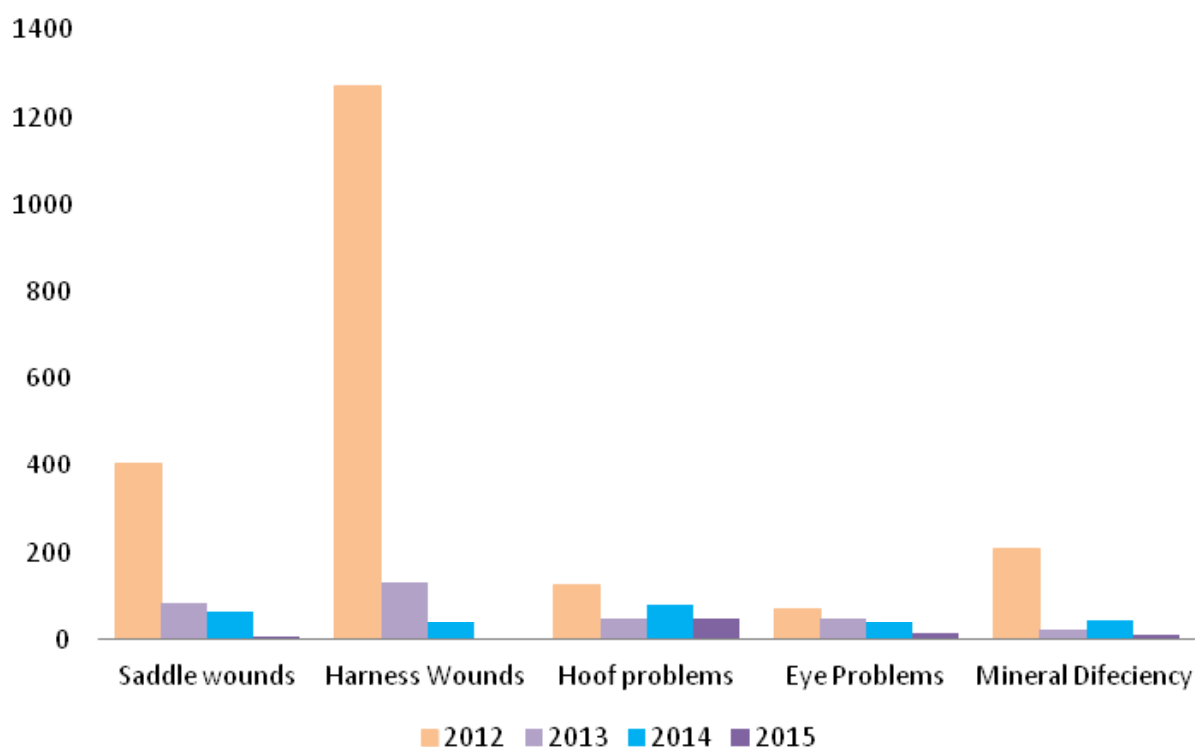


Table 4- Major treatment cases of Equine outreach programme 2015

S.N.	Treatment cases	Jan	Feb	March	April	May	June	July	Aug	Sep	Oct	Nov	Dec	Total
1	Harness wound	0	1	1	-	-	-	2	1	-	-	-	-	5
2	Saddle wound	4	2	1	-	1	-	1	-	-	-	-	-	9
3	Hobbles wound	1	0	1	-	-	2	-	-	-	-	-	-	4
4	Hoof Problem	2	4	12	-	1	1	5	3	14	4	3	-	49
5	Hip dislocation	0	0	2	-	-	-	-	-	-	-	-	-	2
6	Leg lameness	6	19	13	3	5	2	1	1	2	-	-	-	52
7	Eye problems	1	4	2	1	-	-	3	1	-	2	-	-	14
8	Mixed infection	1	1	4	3	-	1	-	-	-	-	-	-	10
9	Pyrexia	3	5	4	-	1	1	1	-	-	-	-	-	15
10	Anaemic condition	2	0	1	1	-	-	-	-	-	-	-	-	4
11	Mineral deficiency	2	0	2	3	2	-	2	-	-	-	-	-	11
12	An urea condition	2	1	2	-	-	-	-	-	-	-	-	-	5
13	Diarrhoea	1	2	2	-	-	-	-	-	-	-	-	-	5
14	Colic	2	3	4	-	-	-	-	-	3	-	-	-	12
15	Respiratory	5	3	3	1	1	-	-	-	-	-	-	-	13
16	Circling movement	0	1	0	2	-	-	-	-	-	-	-	-	3
17	Dystocia condition	0	0	1	-	-	-	-	-	-	-	-	-	1
18	Dermatitis	0	0	1	-	-	1	1	-	-	-	-	-	3
19	Anal prolapse	0	0	1	-	-	-	-	-	-	-	-	-	1
20	Tetanus vaccine	250	190	85	-	50	-	3	-	3	25	-	-	606
21	Deworming	250	190	85	-	50	-	3	-	15	25	-	-	618
22	Emergency	0	0	5	28	-	-	3	-	-	-	-	-	36
23	Anaplasmosis	2	0	4	-	-	1	-	1	-	-	2	-	10
24	Strangle Suspicion	1	0	1	-	-	-	-	-	-	-	-	-	2
25	Maggot infection	0	1	0	-	-	-	-	-	-	-	-	-	1
TOTAL		535	427	237	42	111	9	25	7	37	56	5	0	1491

28 equines from brick factories of Lalitpur were provided emergency treatment during Earthquake (April)



Figure 5- Figurative representation of major decline in health problems of working animals since 2012*Table 5- Major decline in health problems of working animals in brick factories of Lalitpur since 2012*

Major Treatments	2012	2013	2014	2015
Saddle wound	403	86	64	9
Harness wound	1271	132	43	5
Hoof problems	128	51	82	49
Eye problems	73	52	43	14
Mineral deficiency	207	22	47	11

Animal Nepal conducted a baseline survey using HANDS in 15 brick kilns in Lalitpur District. The team witnessed some major improvement in the health of working equines compared to previous surveys.

AN basically conducts these surveys to locate the main problems in equine management, to change attitude of equine owners and to evaluate our work. The brick factories that showed major improvements this year were Bol Bom, Kantipur and Shree No. 1. UK Brick

factory's performance degraded this year because new equine handlers were hired who had less experience, no education and came from severely marginalised communities.

The main parameters of this survey are :

- Behaviour and communication
- Body condition score
- Wound
- Lameness
- Other sign of injury including disease, harness, travel distance and feeding.

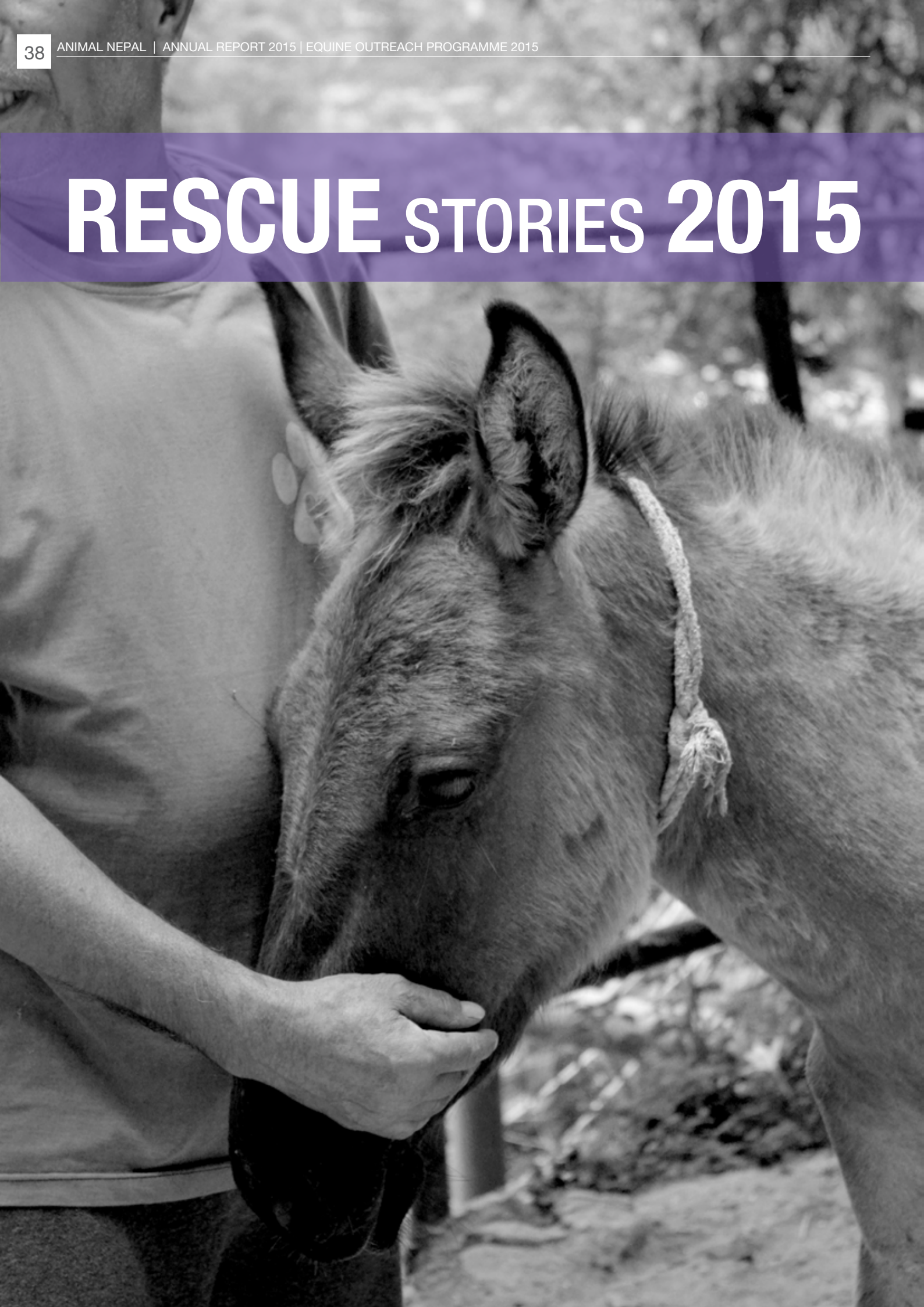
Table 6- Baseline survey on brick factories of Lalitpur 2015

S.N.	Name of Brick Factory	No. of equine owner	Number of animal used	Grade obtained
1	Bol Bom Brick Factory	4	49	3
2	Kantipur Brick Factory	2	24	3
3	Santaneshwor Brick Factory	3	39	3
4	B.B.M Brick Factory	2	20	1.5
5	Bajra Brick Factory	4	51	4
6	Hanuman Brick Factory	3	44	4
7	R.M Brick Factory	3	48	3
8	Trishakti Brick Factory	1	14	3
9	Gautam Buddha Brick Factory	2	19	2.5
10	New Bhairab Brick Factory	3	37	2.5
11	Dhalkeshwor Mahadev Brick Factory	2	30	2.5
12	Champi Brick Factory	4	56	3
13	U.K Brick Factory	4	47	2.5
14	Shree No.1 Brick Factory	5	65	3
15	Lele Brick Factory	4	42	3
Total		46	585	-



Photo 1. Animal Nepal para vet Hari Krishna during the assessment of working equine at Kantipur Brick factory

RESCUE STORIES 2015





ANIMAL NEPAL this year rescued seven equine, one from Kantipur BF and remaining six equine from one of our adopters who had to move out of the country. The condition of these equines at the time of their rescue was below average but now they are in much better condition at our Godavari donkey sanctuary.



PAPPU a new female mule was welcomed in our sanctuary rescued from Bol Bom brick factory, Lalitpur. Since her owner Pappu Kasgar didn't want the mule to work anymore because of her walking problem occurred from her fetlock joint. We respected his decision and welcomed 'Pappu' the mule (named after her owner) in the sanctuary. Despite of the joint problem, Pappu is a very healthy and sound mule who is extremely gentle and friendly with other mules and visitors.



NAINA is a white female donkey who had below the average body condition as she suffered from blindness and overgrown hoofs. Since she is an old donkey she is given special treatment and care in our sanctuary. She also suffered from ecto parasites and broken left ear which is almost recovered now.



FUDGE is a grey male donkey. He is a very healthy donkey with body score condition above average. He is extremely friendly with other equines and our staff in the sanctuary.



BB, the female donkey has a beautiful white complexion and is extremely healthy with no any sign of illness. She is friendly with other donkeys and staff in the sanctuary.

SHAKTI is a beautiful female horse who is quite healthy now. She suffered from ecto parasites at the time of her rescue.

NOBY, the friend of Shakti is a beautiful castrated red male horse. He is extremely friendly and has no sign of illness.

KRISHNA, is a dark brown male donkey. He is young and friendly and his overall body score condition is average. However, he suffered from an overgrown hoof and mineral deficiency during rescue.

2015

FINANCIAL OVERVIEW



Table 7- Animal Nepal income 2015

SOURCE	NRs	USD (@ NRs. 100)
Overseas grants Animal Nepal	1,25,28,233.00	125282.33 ¹
Local donations	1,40,18,524.00	140185.24
Bank interest	2,98,866.94	2988.66
Total	26845624.00	268456.24

Table 8- Animal Nepal Expenditure 2015

SOURCE	NRs	USD(@Nrs100)
Chobar Animal Sanctuary and Humane Dog Management Programme	34,26,707.00	34267.07
Equine Outreach Program	43,73,760.00	43737.60
Godavari Donkey Sanctuary	16,02,975.00	16029.75
Office Administration Cost	10,82,253.00	10822.53
Earthquake Relief Program	30,45,606.00	30456.06
Total	1,35,31,301.00	125313.01

¹ Please note that local donations are disproportionately large as they include income from the Earthquake Fundraiser Note: Surplus of earlier year will be used to buy a plot of land to build an earthquake resilient shelters for Animal Nepal.

TEAM ANIMAL NEPAL

HEAD OFFICE



Pramada Shah
PRESIDENT
Joined: April 2008
pramada00@yahoo.com



Shristi Singh Shrestha
VICE- PRESIDENT
Joined: April 2013
animalnepalshristi@gmail.com



Lucia de Vries
CO-FOUNDER
Joined: April 2003
animalnepallucia@gmail.com



Uttam Kafle
EXECUTIVE DIRECTOR
Joined: December 2012
animalnepaluttam@gmail.com



Kapil Kafle
PROGRAM MANAGER
Joined: October 2015
animalnepalkapil@gmail.com



Chadani Lama
COMMUNICATION OFFICER
Joined: June 2014
animalnepalchadani@gmail.com



Rupa Dali Shrestha
ACCOUNTANT
Joined: December 2012
animalnepalrupa@gmail.com

HUMANE DOG MANAGEMENT PROGRAMME



Krishna Kumar Yadav

VETERINARIAN

Joined: July 2013

animalnepalkrishna@gmail.com



Sunil Thapa

VETERINARIAN

Joined: December 2014

animalnepalsunil@gmail.com



Santosh Gautam

VET TECHNICIAN

Joined: November 2010

animalnepalsantosh@gmail.com



Kushal B.C

VET TECHNICIAN

Joined: December 2015

animalnepalkushal@gmail.com



Mohan Maharjan

CARE TAKER

Joined: September 2009



Sangeeta Deula

CARE TAKER

Joined: December 2011



Ishwori Maharjan

CARE TAKER

Joined: July 2010



Ramchandra Shrestha

DRIVER

Joined: October 2014

EQUINE OUTREACH PROGRAMME



Atish Yadav

VETERINARIAN

Joined: December 2013

animalnepalatish@gmail.com



Shankar Sapkota

VET TECHNICIAN

Joined: November 2010

animalnepalshankar@gmail.com



Tara Budathoki

VET TECHNICIAN

Joined: December 2011

animalnepaltara@gmail.com



Hari Krishna Shrestha

VET TECHNICIAN

Joined: August 2012

animalnepalhari@gmail.com



Santa Bahadur Shrestha

CARE TAKER

Joined: December 2011



Masini Shrestha

CARE TAKER

Joined: October 2014

WITH THANKS TO:



The
Mayhew
Animal
Home



ANNUAL REPORT 2015

Contact us:

Tel ++ 977 1 5538068
Mobile ++ 977 9841 334537
Email: animalnepal@gmail.com
Website: www.animalnepal.org

Mailing Address:

PO Box 23066, Kathmandu
Dobighat, Lalitpur District

Follow us:

facebook.com/animalnepal.org
twitter.com/AnimalNepal